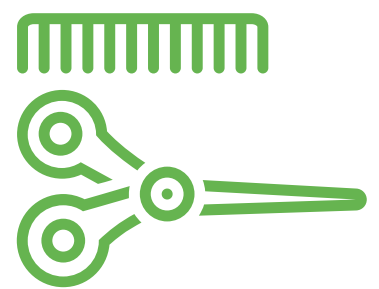
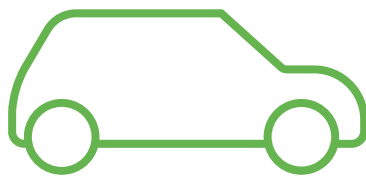


# What lockdown rules are changing in Wales?

From the 12th April:

- All non-essential retail can open
- All remaining close-contact services can reopen
- All remaining school pupils return to classrooms
- Travel into and out of Wales allowed from the rest of UK



From the 26th April:

- Outdoor attractions could reopen
- Outdoor hospitality could reopen



By early May:

Organised outdoor activities for up to 30 people.

Gyms, leisure centres, and fitness facilities could reopen for one-to-one training.



Information is from the Welsh Government and is subject to change depending on case numbers