

Indoor Hospitality

The new rules for Wales

The Welsh Government have announced that indoor hospitality can open from 17th May 2021 under the following rules:



Businesses must have a full, specific Covid-19 Risk Assessment in place

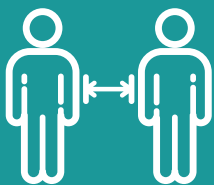


Premises must be well-ventilated, with doors and windows open wherever possible

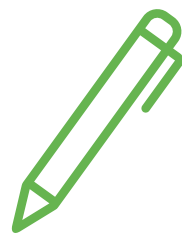
Premises must be deep-cleaned before opening and then cleaned regularly



6 people from different households can meet indoors



Customers from different households must still follow social distancing rules



Customers must give their contact details for track and trace. Download the evePASS app to make this quick and easy.



Customers must be seated to order and consume their food and drinks.



Face coverings must be worn other than when seated to eat or drink

There will be no live music and TV broadcasts will need to be kept at a low volume



Businesses should set and display the maximum capacity for inside and outside the premises and put in place measures for managing this.

Businesses should designate a named member or members of staff per shift to monitor Covid-19 hygiene and enforcement of social distancing/safety protocols – acting as 'Covid Monitors'